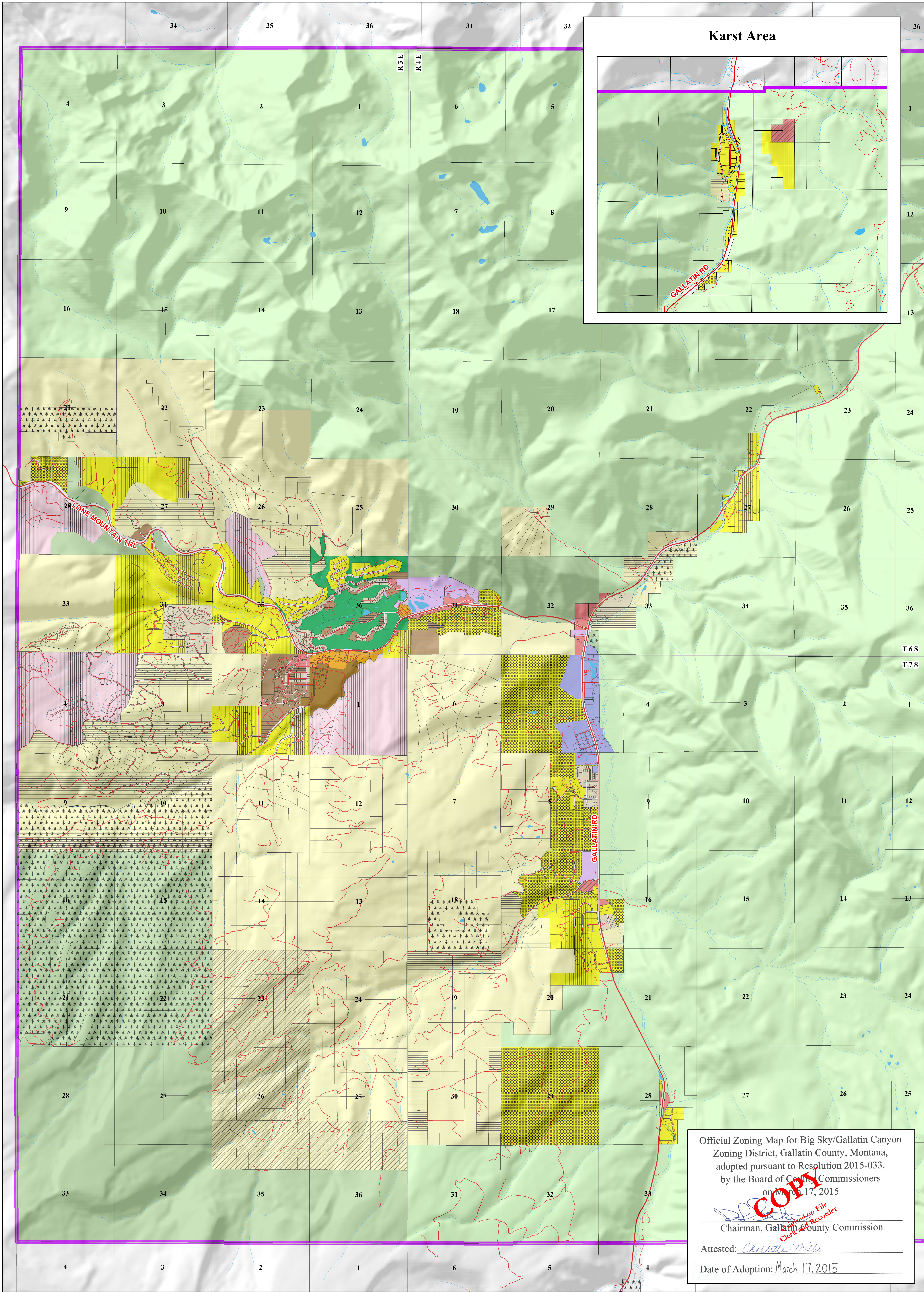




Gallatin Canyon/Big Sky Zoning District

3/17/2015

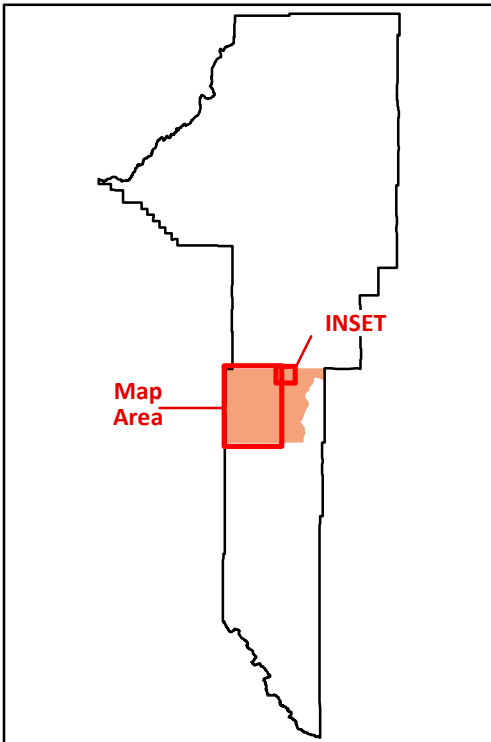
Gallatin County, Montana



Official Zoning Map for Big Sky/Gallatin Canyon
Zoning District, Gallatin County, Montana,
adopted pursuant to Resolution 2015-033.
by the Board of Commissioners
on March 17, 2015
Charlette Miles
Chairman, Gallatin County Commission
Attested: *Charlette Miles*
Date of Adoption: March 17, 2015

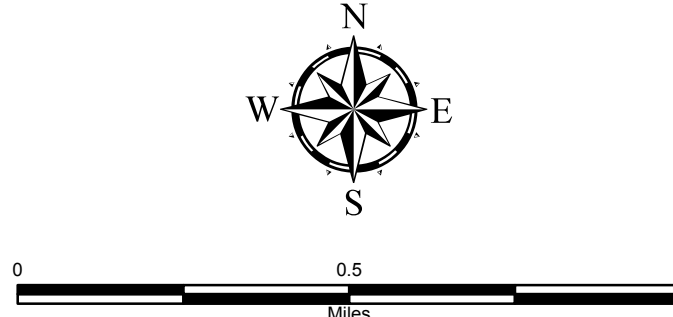
Zoning Classifications

- | | | | |
|-------------------------------------|---|--|--|
| CC: Community Commercial | PL: Public Lands | R-SF-11000: Residential Single Family 11,000 | RC-SF-40: Residential Cluster Single Family 40 |
| CF: Community Facilities | RB: Recreational Business | R-SF-7500: Residential Single Family 7,500 | RC-SF-5: Residential Cluster Single Family 5 |
| CI: Commercial and Industrial Mixed | R: Resort | RC-SF-1: Residential Cluster Single Family 1 | RC-SF-10: Residential Cluster Single Family 10 |
| CR: Community Recreation | TCC: Town Center Commercial | R-MF-3500: Residential Multi Family 3,500 | RC-SF-2.5: Residential Cluster Single Family 2.5 |
| MC: Meadow Center | R-MF-6500: Residential Multi Family 6,500 | RC-SF-20: Residential Cluster Single Family 20 | |
| OSP: Open Space Preserve | | | |



Map Legend

- District Boundary
- Major Roads
- Roads/Driveways
- Lakes and Streams
- Conservation Easements



Gallatin County Planning Department
and GIS Department
311 W. Main St.
Bozeman, MT 59715

20170327_big_sky_gallatin_canyon_zd_final_signed.mxd