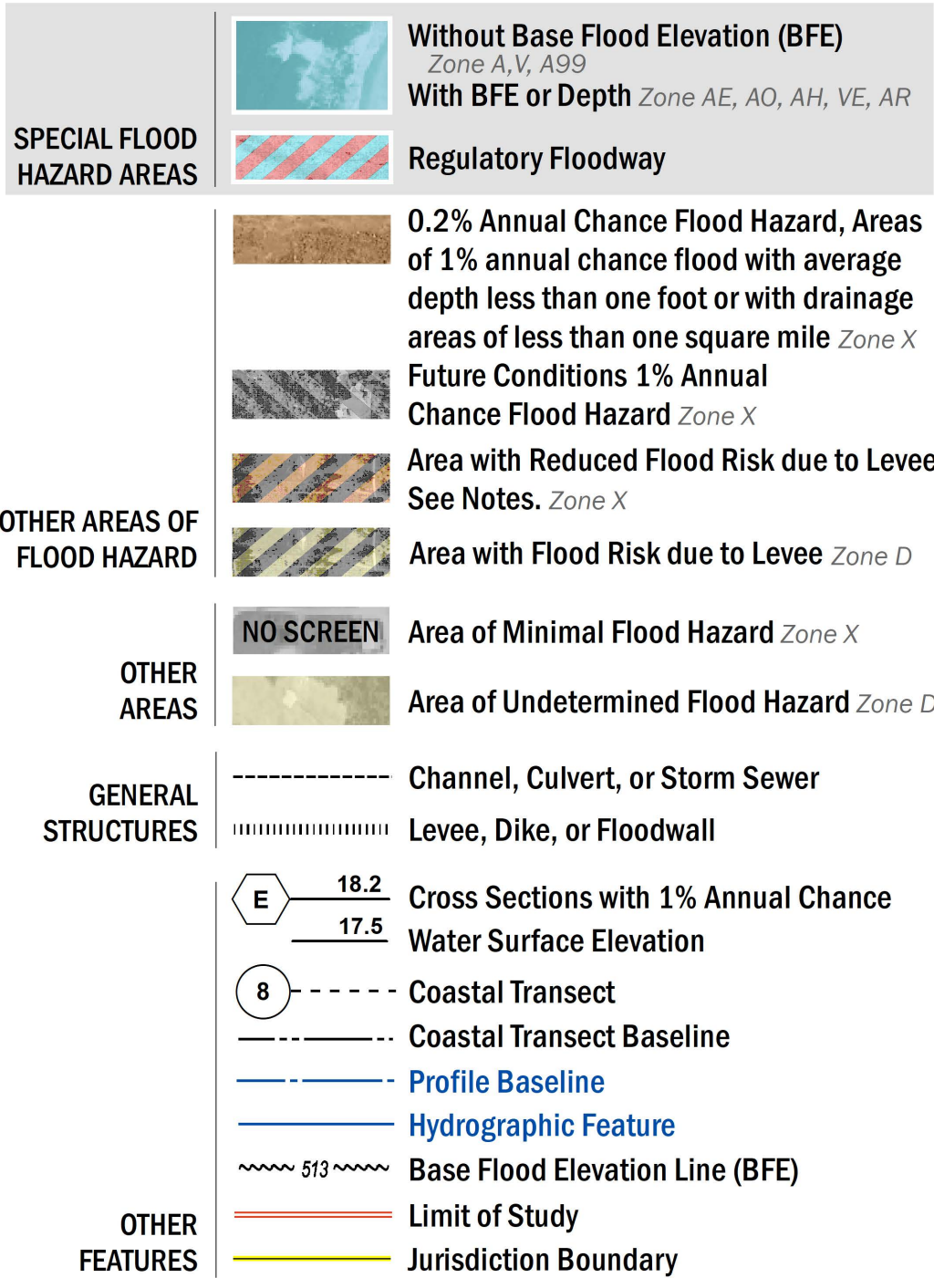


FLOOD HAZARD INFORMATION

SEE FIS REPORT FOR DETAILED LEGEND AND INDEX MAP FOR FIRM PANEL LAYOUT  
THE INFORMATION DEPICTED ON THIS MAP AND SUPPORTING  
DOCUMENTATION ARE ALSO AVAILABLE IN DIGITAL FORMAT AT  
[HTTPS://MSC.FEMA.GOV](https://MSC.FEMA.GOV)



NOTES TO USERS

For information and questions about this Flood Insurance Rate Map (FIRM), available products associated with this FIRM, including historic versions, the current map date for each FIRM panel, how to order products, or the National Flood Insurance Program (NFIP) in general, please call the FEMA Mapping and Insurance eXchange at 1-877-FEMA-MAP (1-877-336-2627) or visit the FEMA Flood Map Service Center website at <https://mfc.fema.gov>. Available products may include previously issued Letters of Map Change, a Flood Insurance Study Report, and/or digital versions of this map. Many of these products can be ordered or obtained directly from the website.

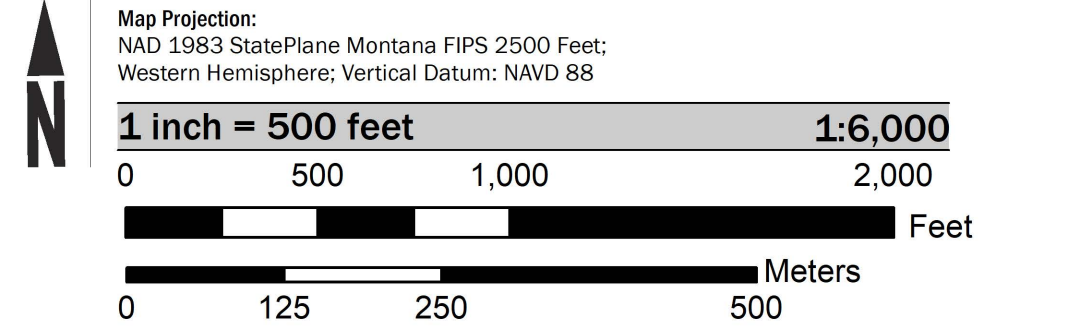
Communities annexing land on adjacent FIRM panels must obtain a current copy of the adjacent panel as well as the current FIRM Index. These may be ordered directly from the Flood Map Service Center at the number listed above.

For community and countywide map dates refer to the Flood Insurance Study Report for this jurisdiction.

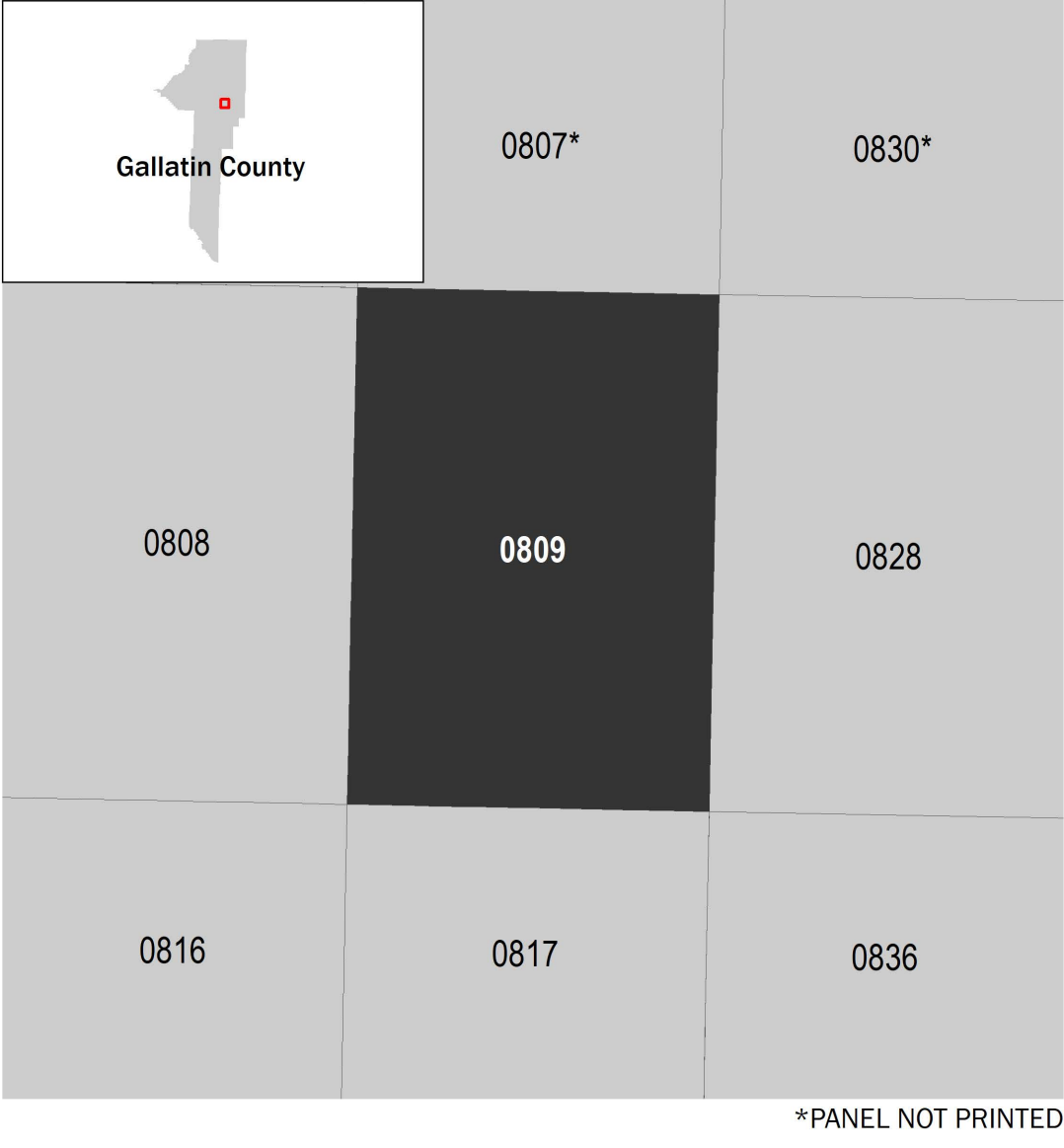
To determine if flood insurance is available in this community, contact your insurance agent or call the National Flood Insurance Program at 1-800-638-6620.

Basemap information shown on this FIRM was provided by Gallatin County GIS department in 2015 at a scale of 1:5,000.

SCALE



PANEL LOCATOR



**National Flood Insurance Program**

**NATIONAL FLOOD INSURANCE PROGRAM**  
FLOOD INSURANCE RATE MAP  
GALLATIN COUNTY, MONTANA  
and Incorporated Areas

PANEL 809 OF 1725

Panel Contains:

COMMUNITY	NUMBER	PANEL	SUFFIX
Bozeman, City Of	300028	0809	E
Gallatin County	300027	0809	E

VERSION NUMBER  
2.3.3.2

MAP NUMBER  
30031C0809E

MAP REVISD  
4/21/2021